

## **ICT LESSON PLAN SECOND TERM FOR BASC 2**

**WEEK: One**

**TOPIC: Features of a keyboard**

**CONTENT:**

### **FEATURES OF A KEYBOARD**

A keyboard is an input device used for typing data into the computer.



### **FEATURES OF A KEYBOARD**

1. It is rectangular in shape
2. It has numbers and alphabet keys
3. It has symbols on it
4. It it has many keys

**WEEK: Two**

**TOPIC: Uses of keyboard**

**CONTENT:**

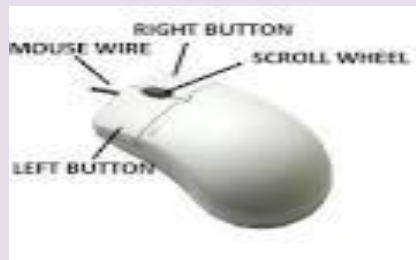
### **USES OF A KEYBOARD**

1. It is used for typing.
2. It is used for giving command to the computer.

3. It is used for scrolling.
4. It can be used to save documents
5. It is used for playing computer games

**WEEK:** Three

**TOPIC:** Features of a mouse



### **FEATURES OF A MOUSE**

1. It looks like a rat.
2. It has two buttons
3. It has a scroll wheel.
4. It is moved on the desk.

**WEEK:** four

**TOPIC:** The uses of a mouse

**CONTENT:**

### **USES OF A MOUSE**

1. It is used for selecting items on the computer
2. It is used for scrolling.
3. It is used for clicking and dragging
4. It is used for opening documents

**WEEK:** Five

**TOPIC:** The uses of computer

**CONTENT:**  
**USES OF A COMPUTER**

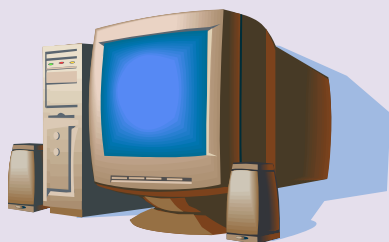


**WEEK: Six**

**TOPIC: I T**

**CONTENT:**  
**MEANING OF IT**

**IT means Information Technology it is a department that monitors information in an organization. Its all about the things we do with a computer. i.e input, output, processing etc..**



**WEEK:** Seven

**TOPIC:** IT devices

**CONTENT:**  
**IT DEVICES**

IT devices are those devices that can do the work of a computer. Examples are: laptops, GSM, tablet, blackberry, ipad etc.



**WEEK:** Eight

**TOPIC:** Meaning of GSM phone

**CONTENT:**

**MEANING OF GSM PHONE**

The GSM is a mobile device which is basically used for making calls, sending text messages etc. the GSM can be used for many things which includes: playing music, browsing the internet, playing games, listening to radio, taking pictures etc.

The full meaning of GSM is Global Systems for Mobile communications.



**WEEK:** Nine

**TOPIC:** Parts of the GSM phone

**CONTENT:**

**PARTS OF THE GSM PHONE**

Typically hardware components of a mobile phone include display (LCD, touch screen), keypad, microphone, speaker, SIM card, battery, USB port, antenna, memory unit(RAM,ROM), camera, CODEC, RF part, DAC/ADC, baseband part (L1/Layer1/physical layer) running on DSP, Application/protocol layers running on CPU, ON/OFF switch and Bluetooth/GPS features.



**WEEK: TEN**

**TOPIC: USES OF GSM**

**CONTENT**

**Our GSM phones can be used in the following ways;**

- i. We can use our mobile phone to make call.
- ii. It can be used to send text message.
- iii. We can listen to music or news with our GSM phones.
- iv. We can use it for arithmetic calculation.
- v. We can use it to search for information on the internet.